

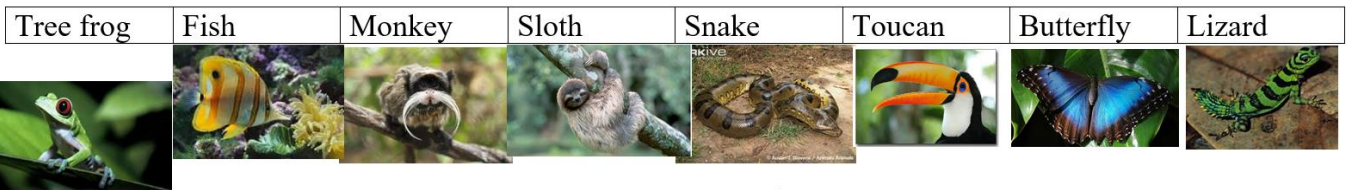
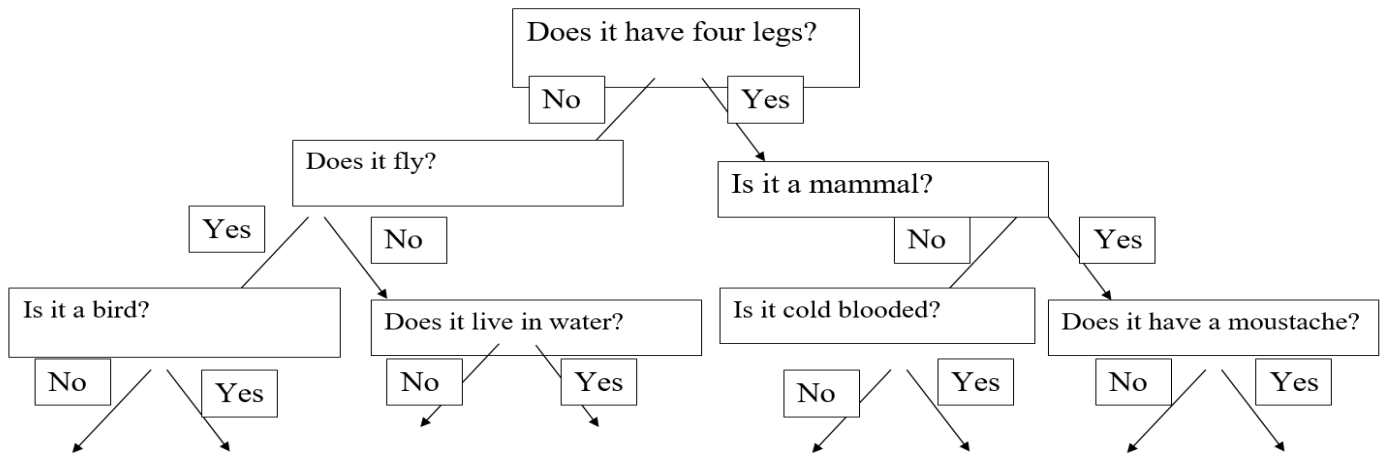
Friday 1<sup>st</sup> May.

Science:

When we classify animals, we ask questions about their features until we have separated them. We use keys to help us.

To help you with the skills of asking questions, play Guess who <http://mathskills4kids.com/guess-who-game> or 20 questions <https://www.kidspot.com.au/things-to-do/activity-articles/play-20-questions/news-story/ef3a2df500cb819913268a781edf27fe>

***WALT – To use a classification key to identify animals***



WILF: Use a key to identify an animal or plant

