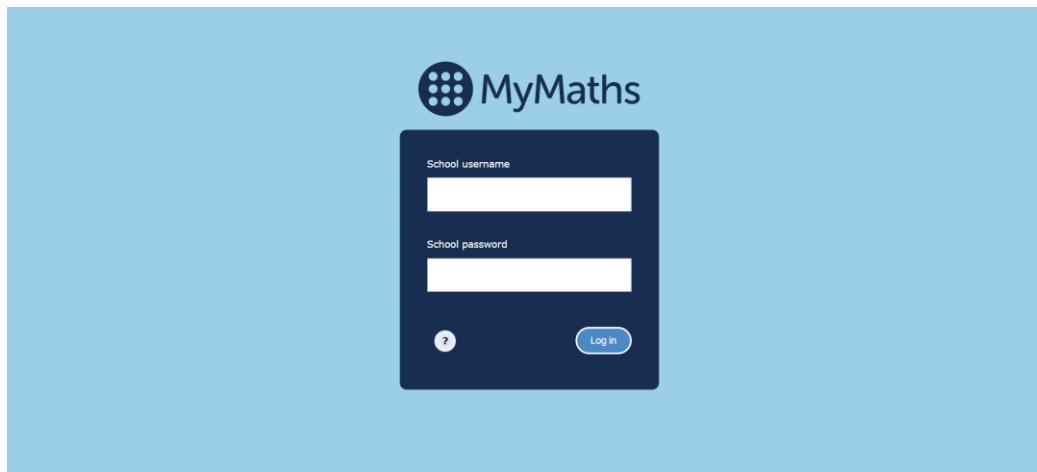
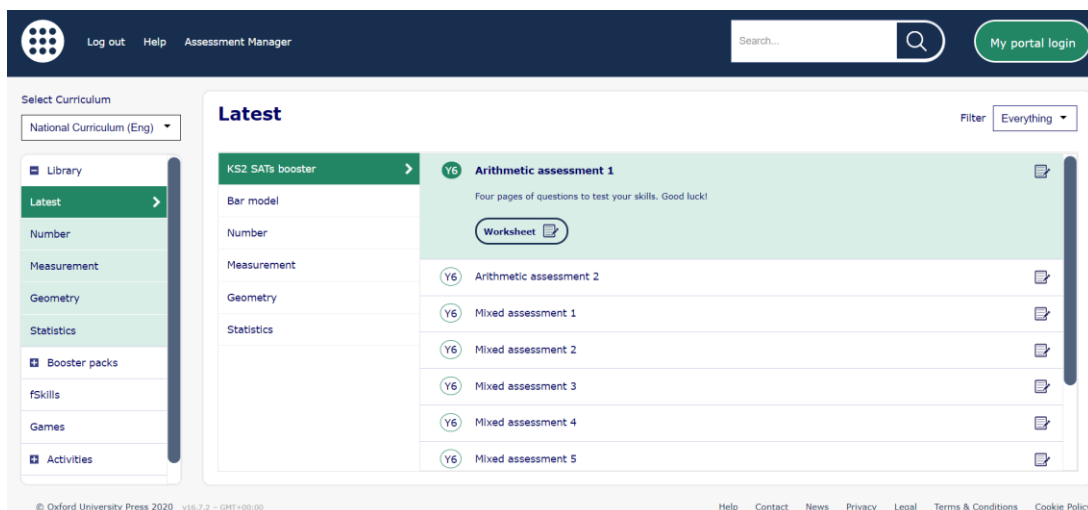


My Maths Child's Login

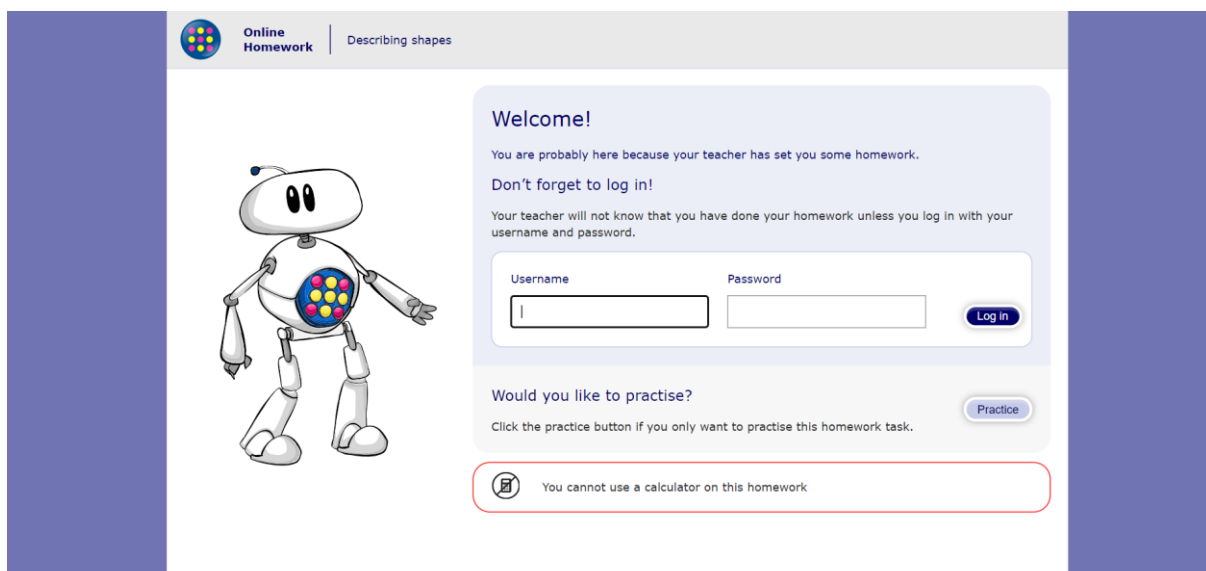
1. Go to <https://login.mymaths.co.uk/login>
2. First you need to login with the school login in



3. You will see this screen. You can choose your own worksheets using the toolbar at the side, there are timestable practise and other worksheets for your year group. When you have chosen something click on it. For some things you will have the option of doing the online lesson or doing the worksheet.



4. You then need to login using your login information



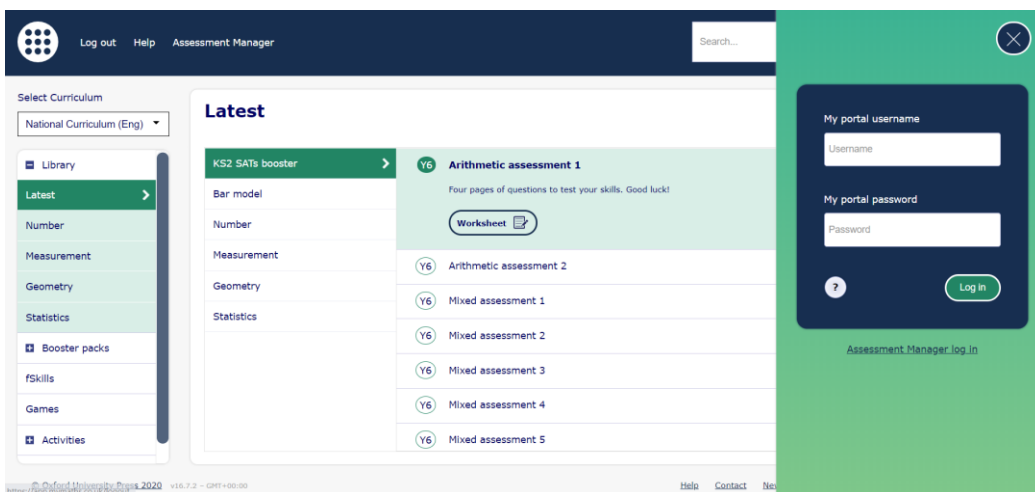
Or

1. Go to <https://login.mymaths.co.uk/login>
2. First you need to login with the school login in

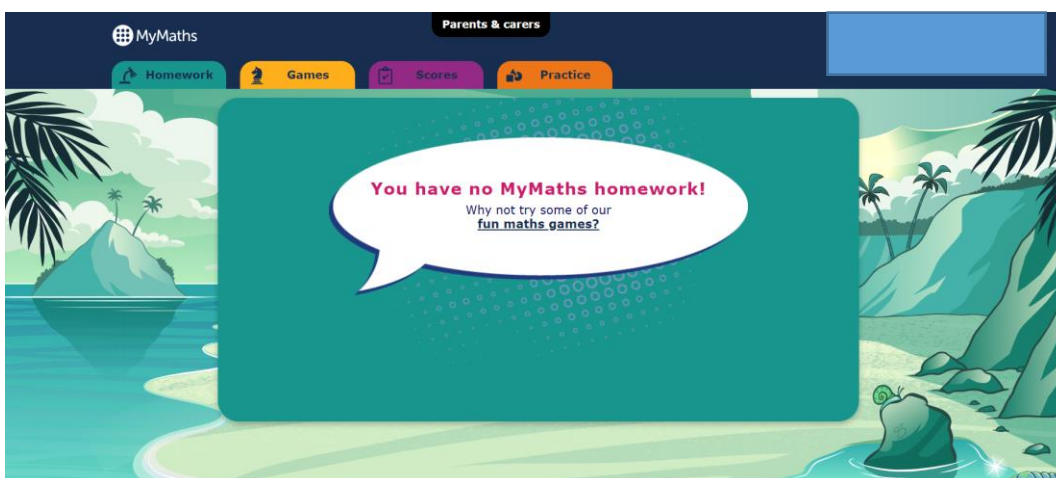


3. Once you have logged in using the school log in, you will see this page.

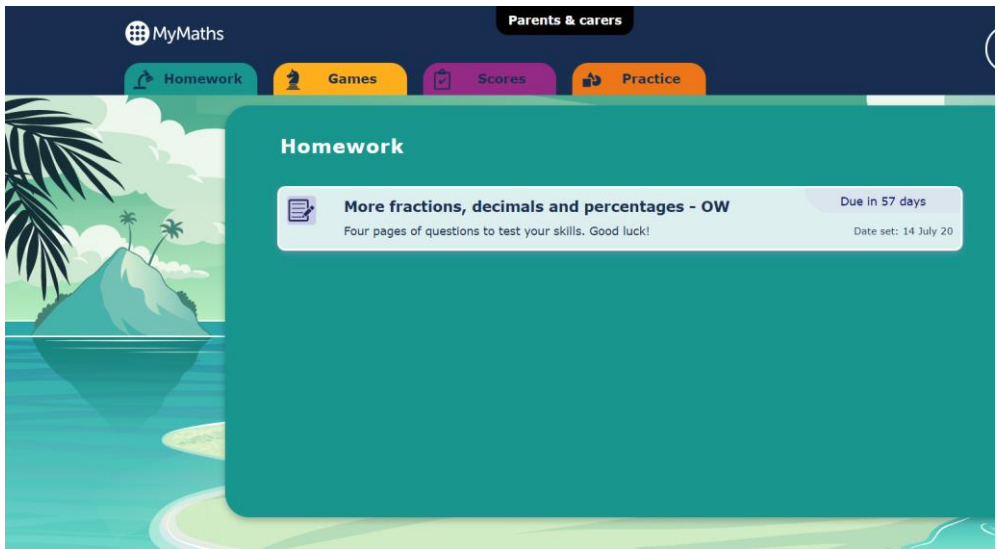
On the right hand side, where it says “My portal username” you need to log in with your own username and password



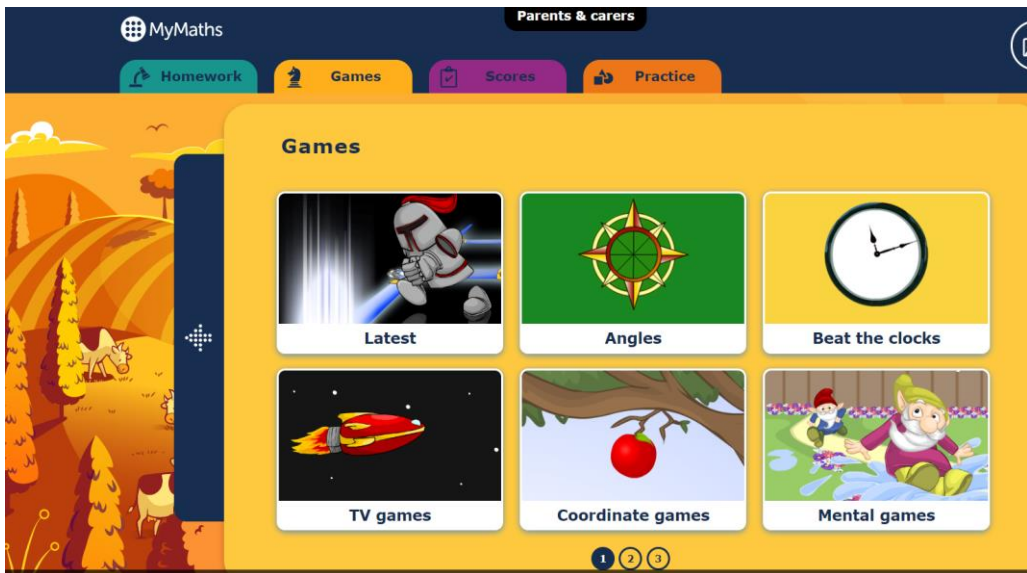
4. Once you have logged in you will see the screen below.



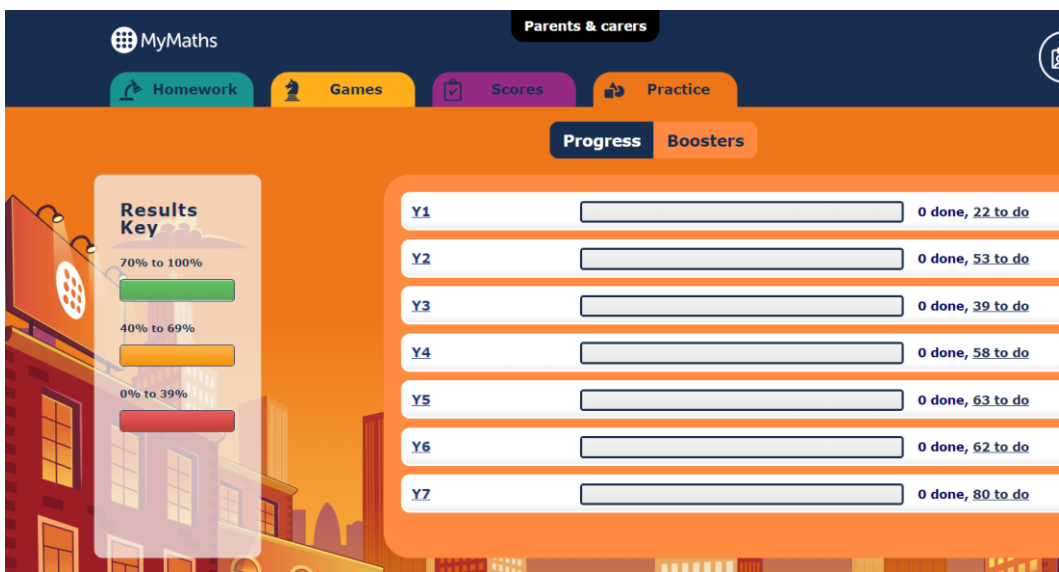
If your teacher has set you anything specific, it will show up under “Homework” This person has been set to do some work on fractions, decimals and percentages. To do the work your teacher has set, just click on it!



5. Otherwise you can choose to play games. Choose something that you know you've learnt about in school, you may want to recap it first in the 'practice' section.



6. Or practise different areas of maths. You need to choose your current year group and practise anything you find difficult or want to do more work on.



Anything that you do your teacher will be able to see how well you have done and what you need help with!