

Subordinating Conjunctions:

What Is a Subordinating Conjunction?



Aim

- I can recognise and use subordinating conjunctions.

Success Criteria

- I can recognise that subordinating conjunctions are used to create subordinate clauses.
- I know that subordinate clauses are used within complex (multi-clause) sentences.
- I can use 'I SAW A WABUB!' to remember the main subordinating conjunctions.
- I can write my own complex (multi-clause) sentences using different subordinating conjunctions.

Getting Started

What is a conjunction?

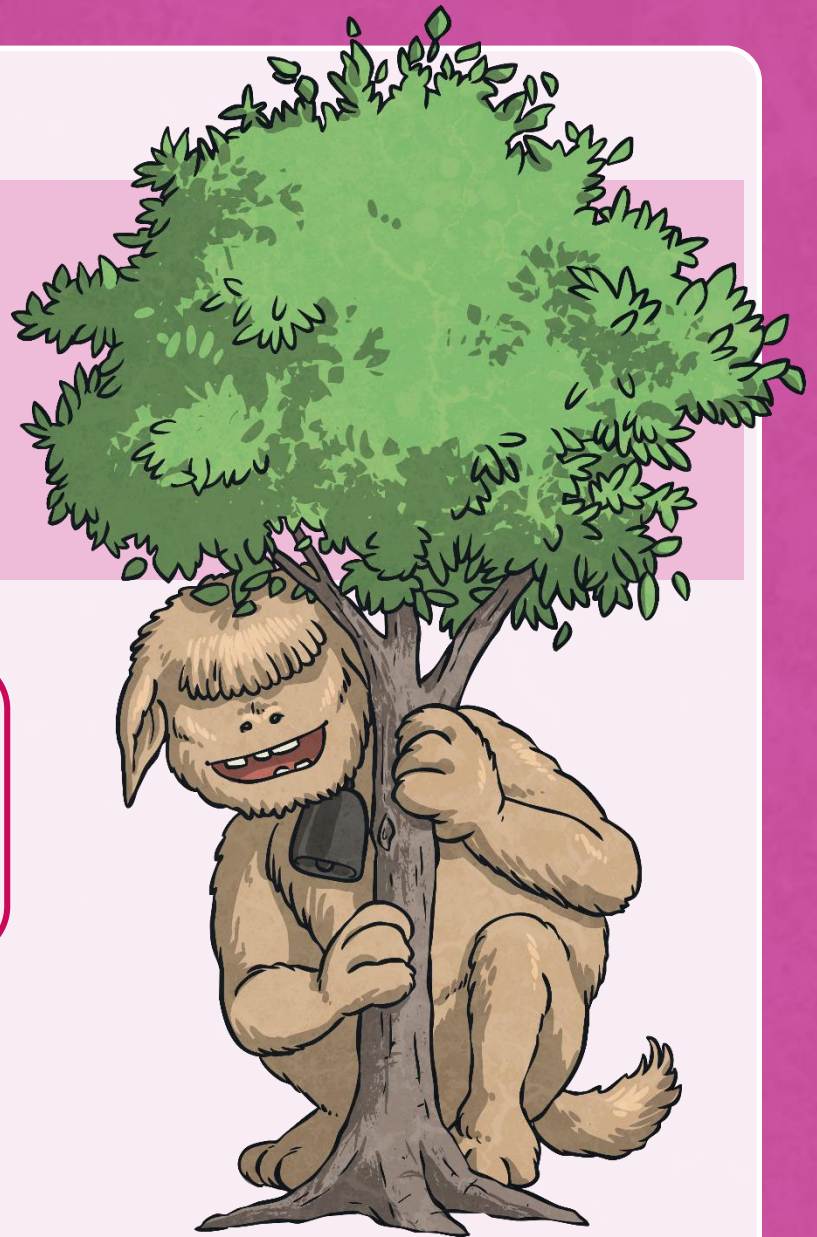
A conjunction links two or more words, phrases or clauses together.

There are **two** main types of conjunctions we use within sentences.
Do you know what they both are?

- **co-ordinating conjunctions** (*e.g. and*) link two main clauses together as an equal pair to create a compound sentence. We usually remember these words using the acronym 'FANBOYS'.
- **subordinating conjunctions** (*e.g. when*) introduce a subordinate clause. You can remember some of the most useful subordinating conjunctions by...

...spotting one of the rarest monsters on the planet, a wabub, and shouting...

**I SAW A
WABUB!**



I Saw a Wabub...

...is an acronym to help you remember the first letters of some of the most important subordinating conjunctions.

If

Since

As

When

Although

While

After

Before

Until

Because

I SAW A WABUB!



Next Steps

So, how do we use subordinating conjunctions?

Subordinating conjunctions are the first words within a subordinate clause. Subordinate clauses do not make sense on their own but, when they are used with a main clause, they create a complex (multi-clause) sentence.

Subordinate clauses will always have a subject and verb within them, e.g.

after she smiled



subordinating
conjunction



subject



verb

is a subordinate clause

after Christmas



Here 'after' is being
used as a preposition.

is not a subordinate clause



Next Steps

I SAW A
WABUB!



Can you spot the **subordinate clause** and the **subordinating conjunction** in this sentence?

The eager pupils sped into school
when the bell rang.



Next Steps

I SAW A
WABUB!



Can you spot the **subordinate clause** and the **subordinating conjunction** in this sentence?

Whales give birth to live young
as they are mammals.





Next Steps

I SAW A
WABUB!



Can you spot the **subordinate clause** and the **subordinating conjunction** in this sentence?

The hopeless rugby team lost the game **because they hadn't trained.**





Next Steps

I SAW A
WABUB!



When the bell rang, the eager pupils sped into school.

Subordinating conjunctions can also be used as the first word in a sentence. When the subordinate clause comes before the main clause, make sure you remember to use a comma to mark where the subordinate clause ends.



Now look at your single clause sentences and see if you can extend them with a subordinate clause.

Remember that a subordinate clause wouldn't make sense on its own. It is just adding more information to the sentence.

e.g.

The talented musician played his guitar because he wanted to show off his skills.



Quick Quiz: Question 1

I SAW A
WABUB!



Can you spot the subordinating conjunctions
in these sentences?

- a) **Until** she tried, Daphne didn't know that she could whistle.
- b) Heavy snow poured from the skies **while** the children made a snowman.
- c) **Although** it was expensive, the couple enjoyed their meal at the award-winning restaurant.



Quick Quiz: Question 2

I SAW A
WABUB!



Complete the sentences below by writing the subordinating conjunctions from the box in the correct places to form complex sentences. Use each conjunction only once.

- a) The greenhouse got smashed _____ the boys were playing football.
- b) _____ they were in trouble, they had to go inside the house.
- c) _____ they were well-behaved, they could have their ball back next week.



Quick Quiz: Question 3

I SAW A
WABUB!



Can you remember all of the subordinating conjunctions using the 'I SAW A WABUB' acronym?

If Since As When Although
While After Before Until Because

Aim

- I can recognise and use subordinating conjunctions.

Success Criteria

- I can recognise that subordinating conjunctions are used to create subordinate clauses.
- I know that subordinate clauses are used within complex (multi-clause) sentences.
- I can use 'I SAW A WABUB!' to remember the main subordinating conjunctions.
- I can write my own complex (multi-clause) sentences using different subordinating conjunctions.

