





Steps to Success

Lockdown	
Date	Wednesday 20 th January
Subject/s	Geography
Learning Objective 	To identify the differences between the Arctic and Antarctic

		SA 	TA 
Success Criteria 	I can use research to find out facts		
	I can present my work using geographic vocabulary		
	I can share my knowledge with others		
Support	Independent Adult Support () Group Work		

Key vocabulary for the lesson:

climate Arctic Antarctic Venn diagram compare similarities differences

Look at the tables below which show the average temperature in the Arctic and the Antarctic.

Arctic

Arctic Village, Alaska	Jan	Feb	Mar	Apr	May	Jun	Jul	Aug	Sep	Oct	Nov	Dec
Average temperature (°C)	-30.7	-27.9	-18.9	-10	3.5	12.5	14.3	9.5	0.2	-11.7	-23.6	-24.7

Antarctic

Vostok Station	Jan	Feb	Mar	Apr	May	Jun	Jul	Aug	Sep	Oct	Nov	Dec
Average temperature (°C)	-32.1	-44.3	-57.9	-64.7	-65.6	-65.2	-66.9	-67.6	-66	-57.1	-43.3	-32.1

What differences do you notice? Which one is colder?

The South Pole is colder than the North Pole. This is because ice at the South Pole sits on top of the land mass of Antarctica, whereas that at the North Pole lies over the Arctic Ocean. Water retains heat better than land. Hence, the North Pole is slightly less cold in winter and warmer in summer.

Arctic Weather

The Arctic is one of the coldest places on Earth. It's easy to imagine that the land is permanently covered in snow and ice. However, the landscape changes in the summer months, when some of the snow and ice melts.

Temperatures can actually reach as low as -68 degrees Celsius in some parts of the Arctic during the freezing winter months. However, temperatures have been known to reach up to 30 degrees Celsius in some parts of the Arctic during the summer months.

Overall, the average temperatures in the Arctic are rising.

Antarctic Weather

Many people know that the Antarctic is the coldest place on Earth. But it may come as a surprise that it is also the windiest, and that the world's largest desert can be found here! Both the weather and climate are incredibly harsh, but just how cold is the Antarctic and why is it classed as a desert?

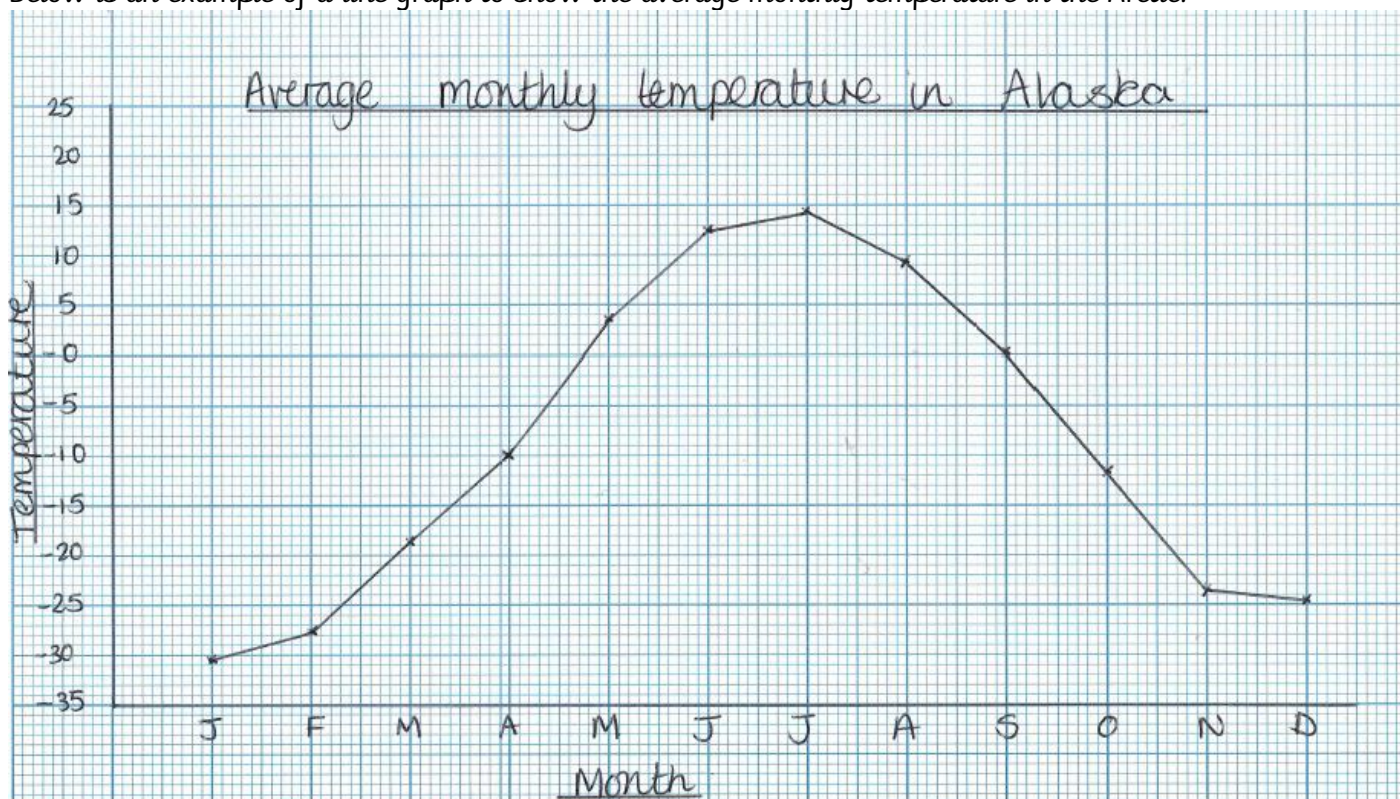
This website has two videos which explain the midnight sun and seasonal changes in the Arctic.

<https://www.activewild.com/the-arctic-facts-for-kids/>

Line Graphs

Use the link on the website <https://whiterosemaths.com/homelearning/year-5/week-6-statistics/> to recap how to draw line graphs.

Below is an example of a line graph to show the average monthly temperature in the Arctic.



The data from the table has been used to plot the points on the line graph. The points have then been joined using a ruler.

Arctic Village, Alaska	Jan	Feb	Mar	Apr	May	Jun	Jul	Aug	Sep	Oct	Nov	Dec
Average temperature (°C)	-30.7	-27.9	-18.9	-10	3.5	12.5	14.3	9.5	0.2	-11.7	-23.6	-24.7

Your task is to draw a line graph to show the average monthly temperature in the Antarctic using the information in the table below.

Vostok Station	Jan	Feb	Mar	Apr	May	Jun	Jul	Aug	Sep	Oct	Nov	Dec
Average temperature (°C)	-32.1	-44.3	-57.9	-64.7	-65.6	-65.2	-66.9	-67.6	-66	-57.1	-43.3	-32.1

