



Steps to Success

Date	Tuesday 19 th January 2021
Subject/s	Science
Learning Objective 	To understand food chains

SA 	TA 
---	---

Success Criteria 	I know a food chain shows the source of food/energy and traces back to the sun		
	I can label parts of the food chain: producer, consumer, prey, carnivore, herbivore, omnivore and predator.		
	I can create a food chain for Arctic and Antarctic living things		
Support	Independent	Adult Support ()	Group Work
Lockdown learning: DC			
Key vocabulary for the lesson:			
Producer Consumer Primary Secondary Tertiary prey predator herbivore omnivore carnivore			

Nutrition

Today we are going to look at the nutrition of animals and humans.

Nutrition is when we eat food to give us **energy**.

Adults and children need lots of energy to help them keep moving and keep their bodies healthy!

Children also need food to help them grow.



What's your favourite food?

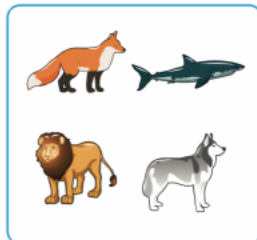
Different types of nutrition

Different animals have different diets.

Animals who just eat plants are called **herbivores**.



Animals that just eat other animals are called **carnivores**.



Animals that eat plants AND animals are called **omnivores**.



Are humans herbivores, omnivores or carnivores? Explain your answer.

Food chains

Sometimes, scientists use **food chains** to show what different animals eat in a **habitat**.

This is a simple food chain:



Look at the arrows, what do you think they mean?

Which animal is a herbivore?
Which animal is a carnivore?

Simple food chain

Can you make a food chain from 3 of these living things?



1)

2)

Sorting Living Things...

Living things can be sorted into **producers**, **prey** and **predators**.



Living things that make their own food are called **producers**.

All plants and trees are producers.



Animals that are hunted for food are called **prey**.



Animals that hunt other animals for food are called **predators**.

Did you know?

Some living things could be prey and a predator! How would this happen?

Producers

Grass
Trees
Fruit

Prey

Mouse
Cow
Salmon

Predators

Human
Fox
Lion
Mouse



Grass



Grasshopper



Frog



Snake



Eagle

Grass hopper

Mouse

Cat



Consumer.

Consume - eat. Consumer -

① Primary consumer

② Secondary consumer

③ Tertiary consumer.



Here are some animals. Can you make 3 food chains?

Label your animals as producer, prey, predator, herbivore, omnivore or carnivore.

e.g

1) Leaves → ants → anteater.

- producer
- prey
- herbivore
- primary consumer
- predator
- carnivore
- secondary consumer

2) _____ → _____ → Human

3) Worm → _____ → _____

4) _____ → rabbit → _____

5) _____ → _____ → Shark

6) _____ → Mice → _____



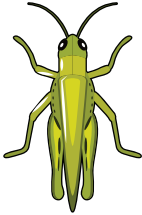
cockroach



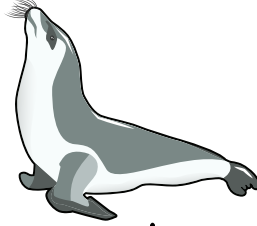
cat



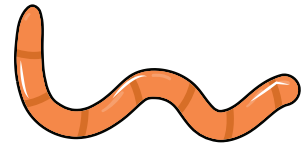
human



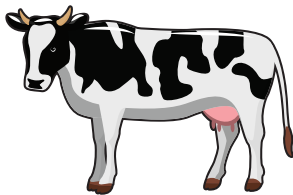
grasshopper



seal



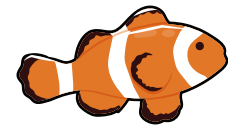
worm



cow



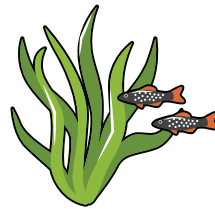
Kingfisher bird



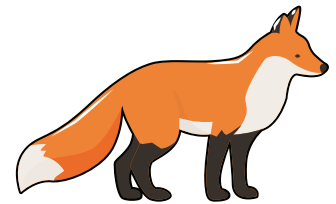
Clown fish



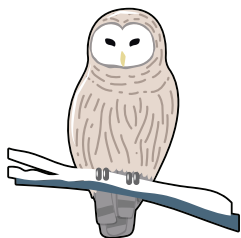
Grass



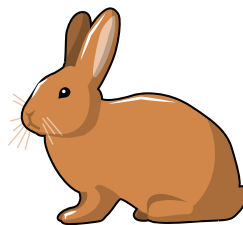
Plankton



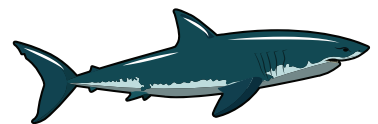
fox



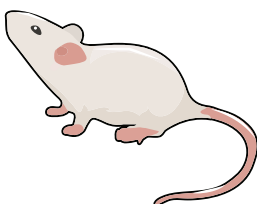
owl



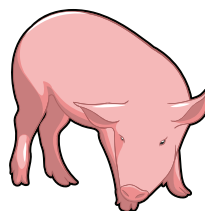
rabbit



shark



mouse



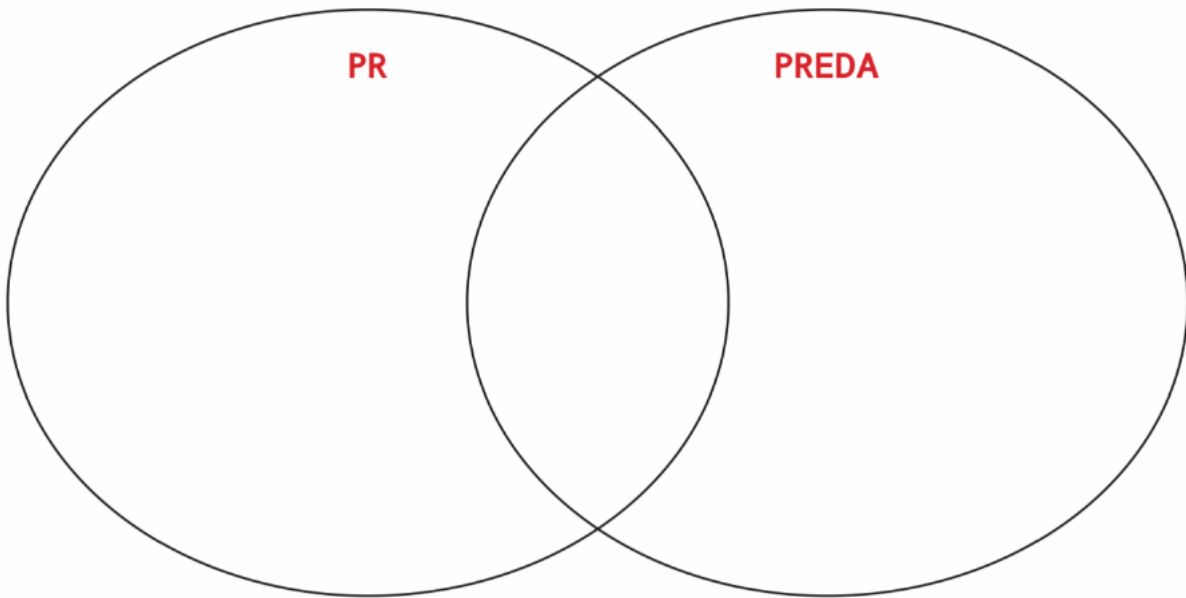
pig



sweetcorn

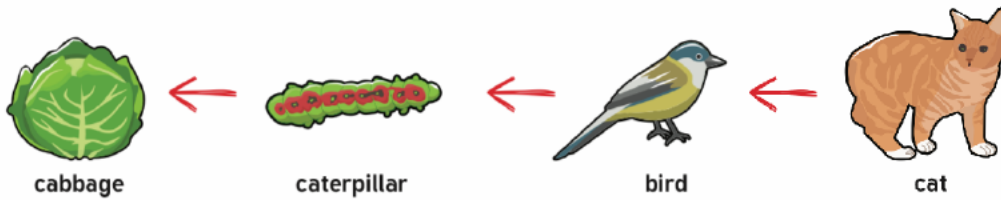


Sort the living things from your food chains into the Venn diagram.



Next Steps

Some children draw a food chain about living things they see in the garden. There is a mistake in their food chain.



What is the mistake in their food chain?

Answers

1) Grass → Pig → Human
• Producer • Primary consumer • Secondary consumer.
• Prey • Predator

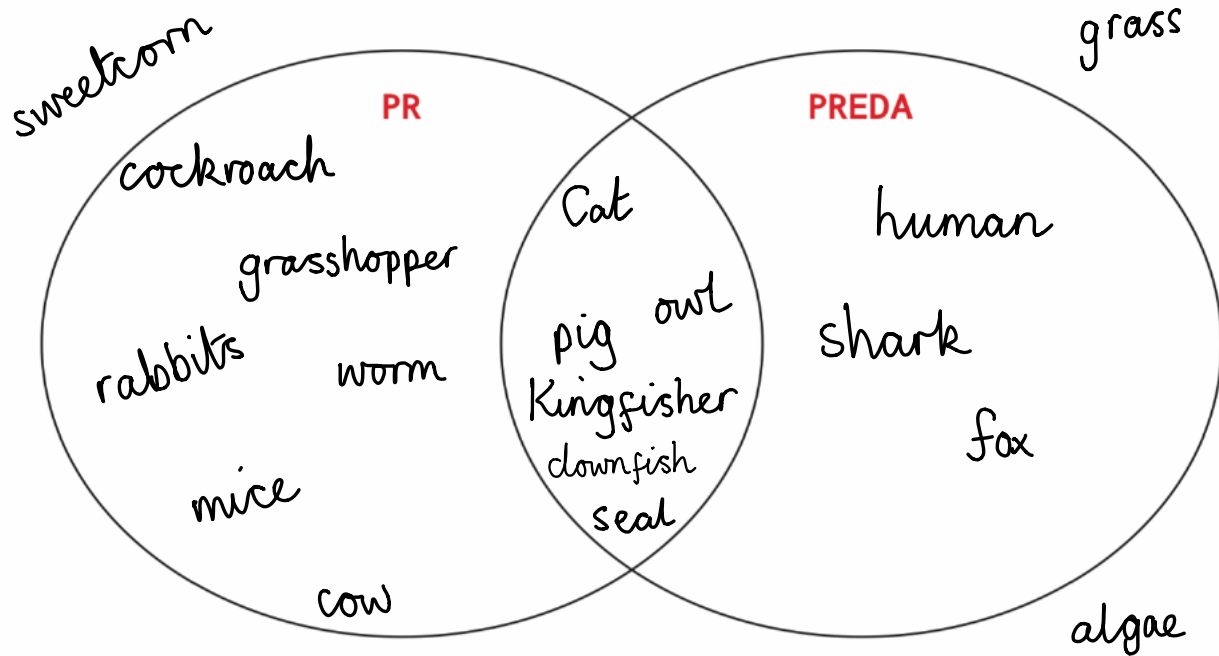
2) Worm → Kingfisher → Fox
• Producer • Primary consumer • Secondary consumer.
• Prey • Predator

3) Grass → Rabbit → Fox
• Producer • Primary consumer • Secondary consumer
• Prey • Predator

4) Plankton → Clownfish → Shark
• Producer • Primary consumer • Secondary consumer
• Prey • Predator

5) Grasshopper → Mice → Owl
• Producer • Primary consumer • Secondary consumer

Sort the living things from your food chains into the Venn diagram.



Next Steps

Some children draw a food chain about living things they see in the garden. There is a mistake in their food chain.



What is the mistake in their food chain?

The arrows are pointing the wrong way. This food chain suggests a cat is eaten by a bird but that isn't true. They should change the direction of the arrows to make it correct.