





Steps to Success

Lockdown	
Date	Monday 8 th February
Subject/s	Geography
Learning Objective 	To write a persuasive speech

		SA 	TA 
Success Criteria 	I can use my knowledge of the Antarctic		
	I can justify my reasons why people should or shouldn't be allowed to visit the Antarctic		
	I can discuss my reasons with others		
Support	Independent	Adult Support ()	Group Work
Key vocabulary for the lesson: climate Arctic Antarctic climate change global warming impact			

Question:

Should humans be allowed to visit the Antarctic? What might be the issues?

Watch the video <https://www.bbc.co.uk/teach/class-clips-video/why-is-antarctica-so-important-for-measuring-climate-change/zmrtsdw>

Further information:

https://www.coolantarctica.com/Antarctica%20fact%20file/science/global_warming2.php

Global Warming - Facts - An Overview

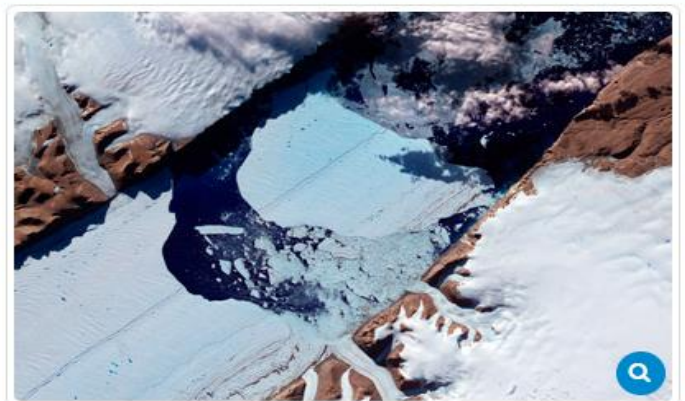
Global warming is the warming up of the planet above the temperature it is expected to be from recent experience. It is such a concern at the moment as it seems that the temperature is rising at a rate far faster than ever before and it is thought that it may be the activities of the human population over the last 150 years or so that is causing it.

What is global warming?

Mean temperatures over the whole planet have risen by about 0.8° C (1.4° F) in the last 100 years. More than half of this increase has happened in the last 25 years. The temperature records used to calculate this are extensive, they have been assembled from thousands of observation sites on land and sea covering a large, representative portion of the Earth's surface. Checks and allowances have been made for any bias that may have arisen from the weather stations or instrument changes.

This is a worry because while the planet can cope with changes in temperature which are known to have

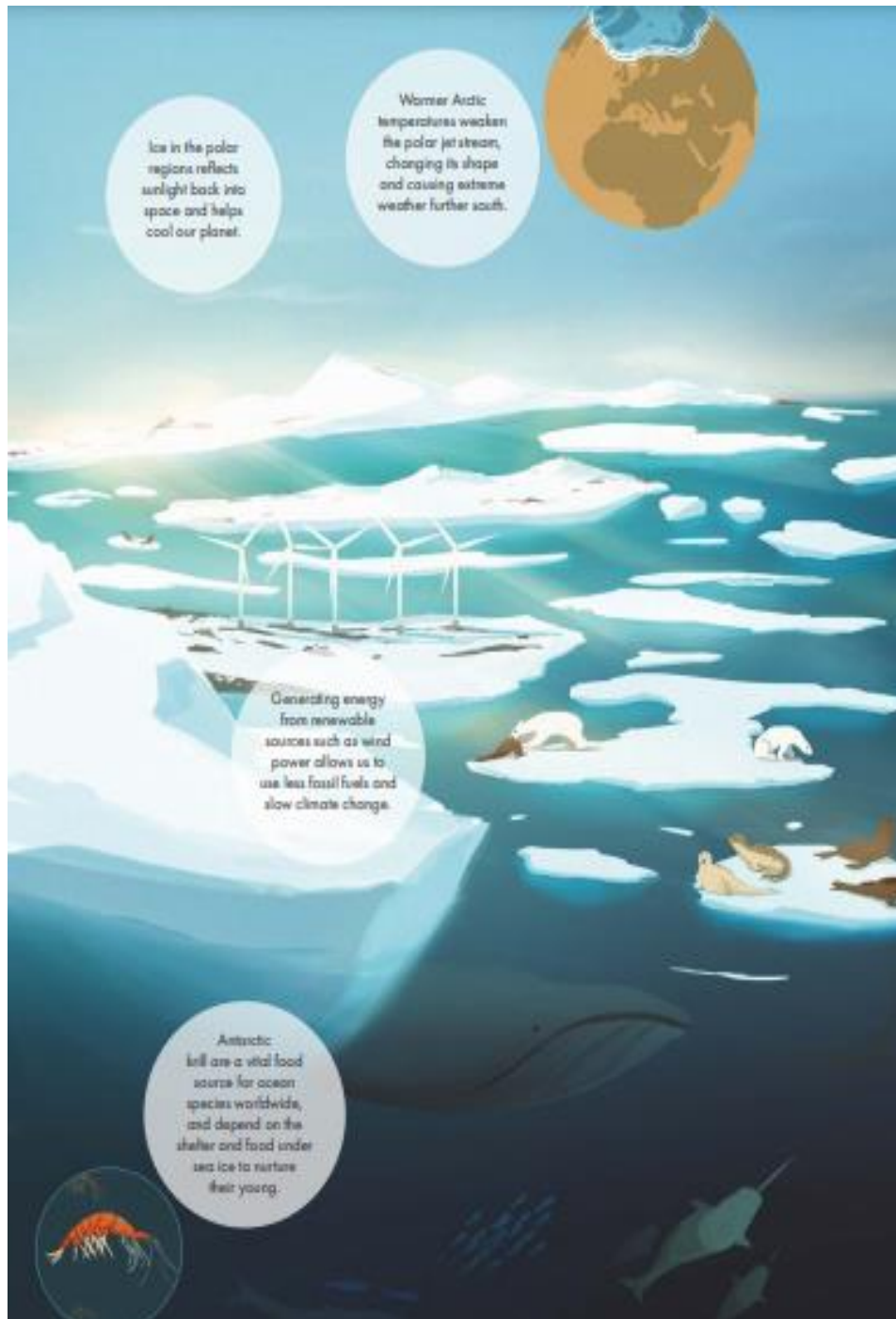
happened over periods of tens and hundreds of thousands of years in the past and certainly over millions of years, we don't know how it will cope with relatively rapid changes in temperature.



The current rate of change is much faster than at any other time in the last 1,300 years as far as we are aware and this is a real problem as while animals and plants can adapt to slow changes by migration for instance, a rapid change will inevitably lead to large extinctions of many species. The human population of the earth is also dependent on a stable climate for established agriculture and also cities, millions if not billions of people stand to suffer from the consequences of global warming mainly the most vulnerable people in the undeveloped nations.

Climate changes in the past over Geological time periods (hundreds of thousands of years upwards) have been very drastic. During cold periods, much of the planet, even thousands of miles from both poles have been ice-covered by huge glaciers. During warm periods, the same regions may have been sub-tropical or even tropical. Accompanying this have been large changes in sea-level so that some areas of land have either become flooded completely or left high and dry.

It is potentially an enormous problem as if the global temperature rises to a level where it is affecting the Antarctic ice-caps, they may begin to melt and cause sea-level rises globally measured in meters. There are a great many cities around the world that are on the coast and they would be flooded and possibly have to be abandoned. There are also a great many countries, especially poorer countries where a large part of the population live in coastal regions. In this case the farm-land would be flooded and the people left homeless and without the ability to feed themselves. In some cases entire island nations (albeit small ones) in the Pacific Ocean could simply disappear.





Task

Begin by making a list of some of the advantages and disadvantages of visiting the Antarctic. E.g. advantage scientists can learn about a new environment, disadvantage spoil natural features.

Think about the question.

Should tourists be banned from Antarctica?

This season around 37,000 tourists are expected to visit Antarctica - home to about 20 million pairs of breeding penguins. But is it ethically acceptable to go on holiday to such a pristine environment?

Read the powerpoint on how to write a balanced argument then write your argument for the question:

Should tourists be banned from Antarctica?

Balanced Argument Checklist



The opening paragraph introduces the argument.	
It contains opposing views of for and against.	
There is evidence to support your arguments.	
There is a concluding paragraph that includes the writer's own opinion.	
It is interestingly written.	
It is written in the third person (except final paragraph).	
The final paragraph is written in the first person.	
It is written using formal and technical language.	
It contains a mixture of causal conjunctions and adverbials that have been used correctly.	

